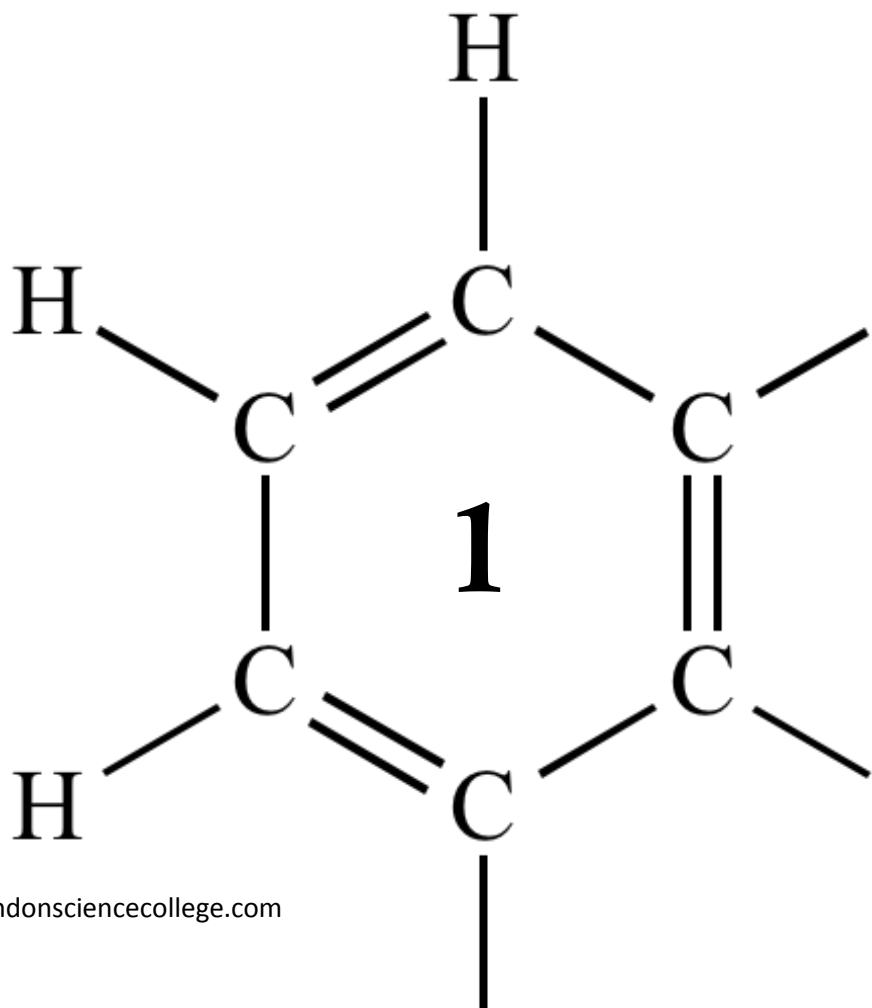


AQA A2 CHEMISTRY

POLYMERS



1

Compound **X** (ClCH_2COCl) is used as a reagent in organic synthesis.

(a) One important reaction of **X** is in the preparation of compound **P** as shown.



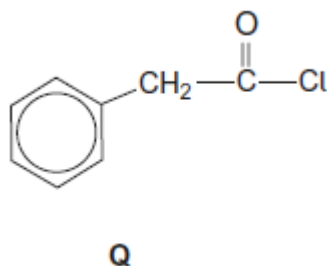
(i) Draw the structure of the electrophile formed by the reaction of **X** with AlCl_3 .

(1)

(ii) Outline the mechanism for the reaction of the electrophile from part **(a)(i)** with benzene in the preparation of **P**.

(3)

(b) Compound **Q** is an alternative product that could be formed when **X** reacts with benzene.



Describe how you could distinguish between **P** and **Q** by a test-tube reaction. Give the reagent used and the observation with each compound.

Reagent

Observation with **P**

Observation with **Q**

(3)

(c) **X** is also used to make the compound HOCH_2COOH . This compound is polymerised to form the polymer known as PGA. PGA is used in surgical sutures (stitches).

(i) Draw the repeating unit of PGA.

(1)

(ii) Production of PGA occurs via a cyclic compound. Two HOCH_2COOH molecules react together to form the cyclic compound and two molecules of water.

Draw the structure of this cyclic compound.

(1)

(d) Poly(propene) is also used in surgical sutures.

(i) Draw the repeating unit of poly(propene).

(1)

(ii) Suggest an advantage of surgical sutures made from PGA rather than from poly(propene).

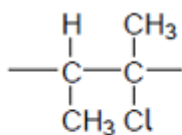
Explain your answer.

.....
.....
.....
.....

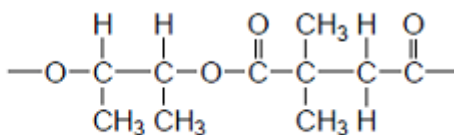
(2)
(Total 12 marks)

2

Repeating units of two polymers, **P** and **Q**, are shown in the figure below.



P



Q

- (a) Draw the structure of the monomer used to form polymer **P**.
Name the type of polymerisation involved.

Monomer

Type of polymerisation

(2)

- (b) Draw the structures of **two** compounds that react together to form polymer **Q**.

Structure of compound 1

Structure of compound 2

(2)

- (c) Suggest an environmental advantage of polymer **Q** over polymer **P**.
Justify your answer.

Advantage

Justification

.....

.....

.....

.....

(3)
(Total 7 marks)

3 Which compound can polymerise by reaction with itself?

A $\text{NH}_2\text{CH}_2\text{CH}_2\text{NH}_2$

B $\text{CH}_3\text{CH}_2\text{CONH}_2$

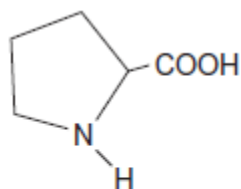
C $\text{HOOCCH}_2\text{COOH}$

D $\text{NH}_2\text{CH}_2\text{COCl}$

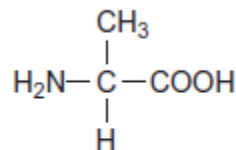
(Total 1 mark)

4

(a) The structures and common names of two amino acids are shown.



proline



alanine

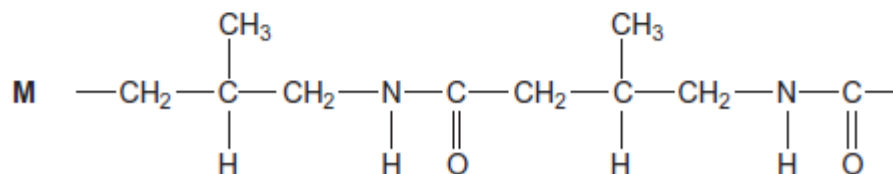
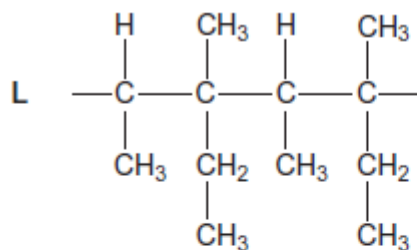
(i) Draw the structure of the zwitterion of proline.

(1)

(ii) Draw the structure of the tripeptide formed when a proline molecule bonds to two alanine molecules, one on each side.

(2)

(b) Sections of two polymers, **L** and **M**, are shown.



(i) Give the IUPAC name of a monomer that forms polymer **L**.

.....

(1)

(ii) Give the IUPAC name of the monomer that forms polymer **M**.

.....

(1)

(iii) Draw the section of a polymer made from a dicarboxylic acid and a diamine that is isomeric with the section of polymer **M** shown.

(1)

(vi) Explain why polymer **L** is non-biodegradable.

.....

.....

.....

(1)

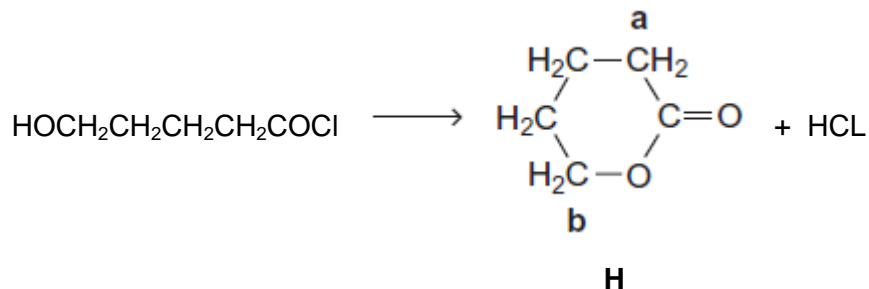
(Total 7 marks)

5

This question is about some isomers of $C_5H_8O_2$

(a) Compound **H** is a cyclic ester that can be prepared as shown.

On the structure of **H**, two of the carbon atoms are labelled.



(i) Name and outline a mechanism for this reaction.

Use **Table C** on the Data Sheet to give the ^{13}C n.m.r. δ value for the carbon atom labelled **a** and the δ value for the carbon atom labelled **b**.

.....

.....

.....

.....

.....

.....

.....

.....

.....

.....

.....

.....

.....

.....

.....

.....

.....

.....

.....

.....

.....

.....

(7)

- (ii) HOCH₂CH₂CH₂CH₂COCl can also react to form a polyester in a mechanism similar to that in part (i).

Draw the repeating unit of the polyester and name the type of polymerisation involved.

.....

.....

.....

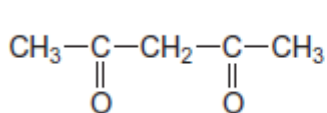
.....

.....

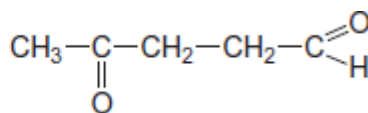
(2)

- (b) State how you could distinguish between compounds **J** and **K** by a simple test-tube reaction.

State how you could distinguish between **J** and **K** by giving the number of peaks in the ¹H n.m.r. spectrum of each compound.



J



K

.....

.....

.....

.....

.....

.....

.....

.....

(5)

- (c) Draw the structure of each of the following isomers of $C_5H_8O_2$
Label each structure you draw with the correct letter **L**, **M**, **N**, **P** or **Q**.

L is methyl 2-methylpropenoate.

M is an ester that shows E-Z stereoisomerism.

N is a carboxylic acid with a branched carbon chain and does **not** show stereoisomerism.

P is an optically active carboxylic acid.

Q is a cyclic compound that contains a ketone group and has only two peaks in its 1H n.m.r. spectrum.

(5)
(Total 19 marks)

6

Lactic acid, $CH_3CH(OH)COOH$, is formed in the human body during metabolism and exercise.
This acid is also formed by the fermentation of carbohydrates such as sucrose, $C_{12}H_{22}O_{11}$.

- (a) (i) Give the IUPAC name for lactic acid.

.....

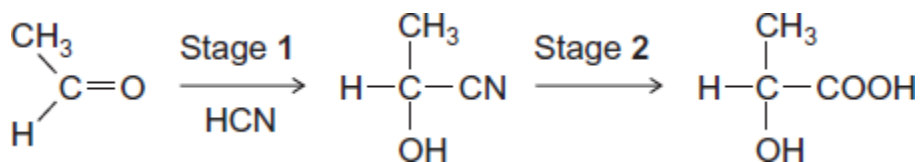
(1)

- (ii) Write an equation for the formation of lactic acid from sucrose and water.

.....

(1)

- (b) A molecule of lactic acid contains an asymmetric carbon atom. The lactic acid in the body occurs as a single enantiomer. A racemic mixture (racemate) of lactic acid can be formed in the following two-stage synthesis.



- (i) Name and outline a mechanism for Stage 1.

Name of mechanism

Mechanism

(5)

- (ii) Give the meaning of the term *racemic mixture (racemate)*.

.....

(1)

- (iii) Explain how you could distinguish between a racemic mixture (racemate) of lactic acid and one of the enantiomers of lactic acid.

.....

(2)

- (c) A mixture of lactic acid and its salt sodium lactate is used as an acidity regulator in some foods. An acidity regulator makes sure that there is little variation in the pH of food.

- (i) Write an equation for the reaction of lactic acid with sodium hydroxide.

.....

(1)

- (ii) The acid dissociation constant K_a for lactic acid has the value $1.38 \times 10^{-4} \text{ mol dm}^{-3}$ at 298 K.

Calculate the pH of an equimolar solution of lactic acid and sodium lactate.

.....
.....
.....
.....

(2)

- (iii) Suggest an alternative name for the term *acidity regulator*.
Explain how a mixture of lactic acid and sodium lactate can act as a regulator when natural processes increase the acidity in some foods.

Name

Explanation

.....
.....
.....

(Extra space)

.....

(3)

(d)



© www.biopac.co.uk

The cup shown is made from PLA, poly(lactic acid).
PLA is the condensation polymer formed from lactic acid.

The polymer is described as 100% biodegradable and 100% compostable.

Compostable material breaks down slowly in contact with the moist air in a garden bin. This produces compost that can be used to improve soil.

The manufacturers stress that PLA cups differ from traditional plastic cups that are neither biodegradable nor compostable.

(i) Draw a section of PLA that shows **two** repeating units.

(2)

(ii) Name the type of condensation polymer in PLA.

.....

(1)

- (iii) An intermediate in the production of PLA is a cyclic compound ($C_6H_8O_4$) that is formed from two PLA molecules.

Draw the structure of this cyclic compound.

(1)

- (iv) Traditional non-biodegradable plastic cups can be made from poly(phenylethene), commonly known as *polystyrene*.

Draw the repeating unit of poly(phenylethene).

(1)

- (v) The manufacturers of PLA claim that the material will break down to compost in just 12 weeks.

Suggest **one** reason why PLA in landfill may take longer than 12 weeks to break down.

.....
.....

(1)

(Total 22 marks)